



ENGLISH HERITAGE  
OSBORNE

MAKE YOUR EVENT  
**HISTORIC**

MEETINGS • CONFERENCES • BANQUETING

## A MAJESTIC VENUE

---

Osborne was the beloved family home of Queen Victoria and Prince Albert. For over fifty years, it played host to family gatherings, ambassadorial receptions and royal wedding parties. When Victoria first saw Osborne, she wrote that 'it is impossible to imagine a prettier spot'. Its lavish rooms are still full of original art and furniture and the gardens are planted to Albert's own designs.

It's a truly personal palace, built with love, full of luxuries and set within a 350-acre estate. Inspirational and intimate, Osborne is a venue that will welcome and wow your guests. Sit down for dinner in the Indian-inspired Durbar Room with its glittering treasures, or hold a reception in the interconnected rooms of the Duchess of Kent suite. The Victoria Hall opens out onto the flower-filled gardens, and combined with the adjacent Orangery it's a perfect space for larger gatherings. The Lawn beside the house and the Beach is an ideal spot for a grand marquee event emanating the extravagant events hosted by the Queen herself.





## IDEAL FOR ENTERTAINING

---

From corporate away days to dinner and dancing for up to 2,500.

### SOMETHING DIFFERENT

Victoria and Albert's tastes, passions and interests left an indelible mark on Osborne. Dine in rooms surrounded by exquisite artwork commissioned by the royal couple and given to one another as presents. Your guests can enjoy intriguing discoveries about the pair's private lives with every turn.

### EASILY REACHED BUT A WORLD AWAY

The Isle of Wight is just two hours from London and served by over 300 ferries a day, but the grounds of Osborne are a rural haven. Enjoy 350-acres grounds, the private beach, coastal views from the terraces and there's even a nine-hole golf course to entertain guests.

### MAKE IT YOURS

A spot of sailing? A stay in one of our holiday cottages? A Christmas themed tour with traditional lunch in the Terrace Restaurant? Customise your event so that your guests can experience the most during their time at Osborne.

# ATMOSPHERIC EVENT SPACES

## THE DURBAR ROOM

Dining: 74

With intricate Indian-inspired carved plaster ceilings and walls this room is a prestigious setting for dining. The spectacular banqueting table makes a stunning centrepiece for your event and is surrounded by a glittering collection of treasures given to Queen Victoria.

## THE DUCHESS OF KENT SUITE

Dining: 36 | Conference: 35 | Meeting: 18

These three bright interlinked rooms look out on to the terraces. They work well on their own or can be used as breakout spaces from the Victoria Hall.

## THE VICTORIA HALL AND ORANGERY

Dinner and Dancing: 100 | Dining: 100 | Conference: 90 | Meeting: 50

The Victoria Hall, with its beautiful arched windows overlooking the garden terraces, was once Queen Victoria's private chapel. Double doors lead outside so you can serve drinks to your guests in the flower-filled gardens before sitting down for dinner. The adjacent Orangery features a marble bar and makes a perfect retreat after dinner.

## THE DURBAR LAWN

Dinner and Dancing: 2,500 | Drinks: 2,500 | Dining: 2,500

For entertaining on a grand scale follow Queen Victoria's lead - she loved to host parties in tents on this lawn beside the house. Enjoy your team building activities, summer ball or lavish dinner under the stars.

## THE LOWER TERRACE

Drinks: 250

The Lower Terraces provide picture-perfect scenery for a drinks reception. During the summer months, you and your guests will be surrounded by flowers replicating the designs that Queen Victoria and Prince Albert would have walked amongst during their many happy days at Osborne.

## THE WALLED GARDEN

Drinks: 100

One of the only remaining parts of the 18th-century gardens, this space is 3 degrees warmer than any other spot on the estate and the ideal place for Prince Albert to grow trees and shrubs alongside flowers for the house. Following your event in this sun trap, you and your guests can sip cocktails amid the floral fragrances of trained Victorian fruit trees, roses and parma violets.

## THE BEACH

Dining: 150

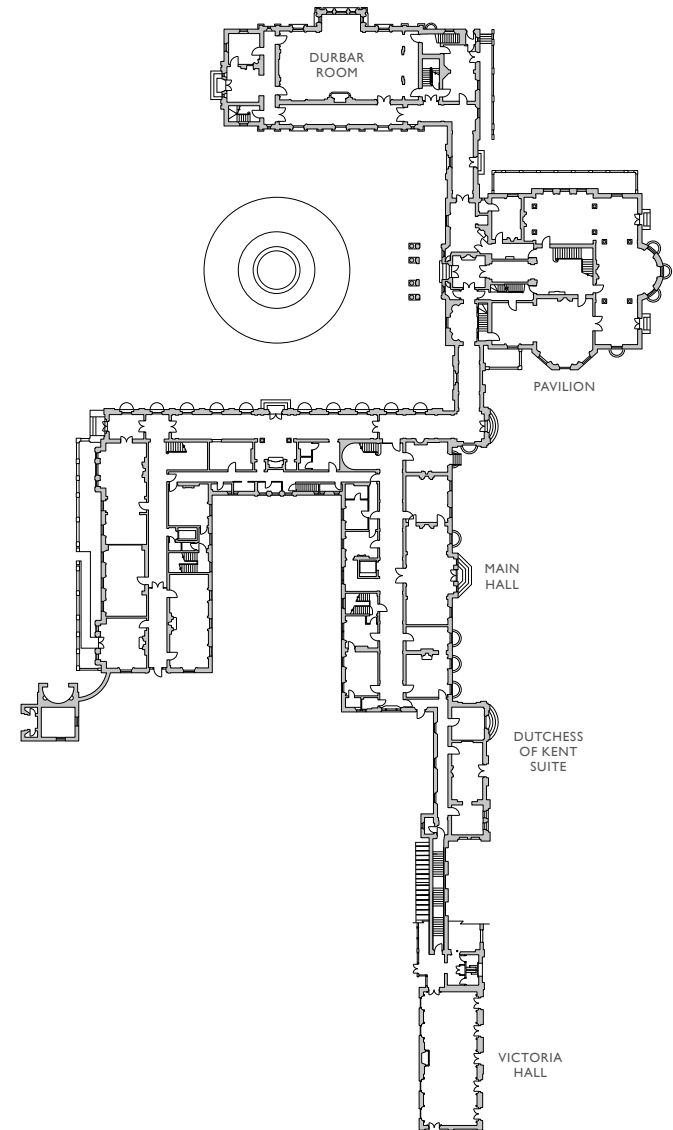
With magnificent views across the Solent, it's easy to see why this charming sand and shingle beach was regularly frequented by Queen Victoria and the royal family. You and your guests can take in the sights and sounds whilst enjoying a drinks reception on the beach.





# FLOOR PLAN

GROUND FLOOR



0 25 metres

# HIRE PRICE LIST

Osborne House is available for exclusive hire seven days a week.

## Peak hire April - September

ROOMS	Days	Half Day	Full Day	Breakfast Meeting	Drinks Reception	Reception	Evening Reception
Duchess of Kent Suite	Mon - Thu	£750	£1,250	£450	£1,250	£2,450	£1,950
Duchess of Kent Suite	Fri & Sun	£750	£1,250	£450	£1,450	£2,950	£2,450
Duchess of Kent Suite	Sat	£750	£1,250	£450	£1,750	£3,450	£2,950
Durbar Room	Mon - Thu	-	-	-	£4,950	-	£6,950
Durbar Room	Fri & Sun	-	-	-	£4,950	-	£6,950
Durbar Room	Sat	-	-	-	£4,950	-	£6,950
Victoria Hall	Mon - Thu	-	-	-	POA	POA	£2,950
Victoria Hall	Fri & Sun	-	-	-	POA	£3,250	£2,950
Victoria Hall	Sat	-	-	-	POA	£3,450	£3,250

GROUND HIRE FOR MARQUEE	Days	Up to 250 Guests	251 - 500 Guests	501 - 1000 Guests	1001 - 1500 Guests	1501 - 2500 Guests
The Beach	Mon - Sun	£4,950	-	-	-	-
Durbar Lawn	Mon - Sun	£4,950	£6,950	£11,950	£14,950	£19,950

## Off-peak hire October - March

ROOMS	Days	Half Day	Full Day	Breakfast Meeting	Drinks Reception	Reception	Evening Reception
Duchess of Kent Suite	Mon - Thu	£750	£1,250	£450	£1,250	£2,450	£1,950
Duchess of Kent Suite	Fri & Sun	£750	£1,250	£450	£1,450	£2,950	£2,450
Duchess of Kent Suite	Sat	£750	£1,250	£450	£1,750	£3,450	£2,950
Durbar Room	Mon - Thu	-	-	-	£4,950	-	£5,950
Durbar Room	Fri & Sun	-	-	-	£4,950	-	£5,950
Durbar Room	Sat	-	-	-	£4,950	-	£5,950
Victoria Hall	Mon - Thu	-	-	-	£1,950	£2,450	£2,250
Victoria Hall	Fri & Sun	-	-	-	£2,250	£2,750	£2,450
Victoria Hall	Sat	-	-	-	£2,450	£3,450	£2,750

\*Maximum capacities based on room layout. Prices are exclusive of and subject to VAT.

Prices are for venue hire only and are exclusive of catering, flowers, lighting, entertainment and other decoration. Catering, florists, lighting, entertainment and decoration must be provided by English Heritage accredited suppliers. English Heritage reserves the right to amend prices at any time without notice. Marquee prices available upon request.

# ACCREDITED SUPPLIERS

Due to the historic nature of this property, we kindly ask that you use one of our accredited suppliers for these aspects of your event.

## CATERERS - Duchess of Kent Suite and Victoria Hall

Elior\* Tel: 01983 298 052 [www.venue-elior.co.uk](http://www.venue-elior.co.uk)

## CATERERS

Elior Tel: 01983 298 052 [www.venue-elior.co.uk](http://www.venue-elior.co.uk)  
 All About Catering Tel: 01983 248 500 [www.allaboutcatering.co.uk](http://www.allaboutcatering.co.uk)  
 Red Herring Tel: 01590 622 222 [www.redherringevents.com](http://www.redherringevents.com)

## ASIAN CATERERS

Mazaa Tel: 020 7343 3983 [www.mazaacatering.co.uk](http://www.mazaacatering.co.uk)

## MARQUEE

Grays Marquees Tel: 01983 209 506 [www.graysmarquees.co.uk](http://www.graysmarquees.co.uk)  
 Bennetts Marquees Tel: 01202 622 622 [www.bennettsmarquees.co.uk](http://www.bennettsmarquees.co.uk)  
 LPM Bohemia The Tent Co Ltd Tel: 07768 007 002 [www.lpmbohemia.com](http://www.lpmbohemia.com)

## FLORISTS

Flowers by Nic Tel: 01983 811 291 [www.floralboutiqueiow.co.uk](http://www.floralboutiqueiow.co.uk)  
 The Flower Garden Tel: 01983 524 061 [www.flowergardeniow.co.uk](http://www.flowergardeniow.co.uk)

\*Elior is the in house caterer for the Duchess of Kent Suite and Victoria Hall.



# EXPLORE OUR OTHER HISTORIC VENUES

## ELTHAM PALACE & GARDENS

Invite your guests into the stylish world of the 1930s. Three interconnected Art Deco rooms offer a versatile space with an aura of glamour. While the medieval hall with its magnificent hammerbeam roof and the beautiful moated garden provide a host of options for events of every size.

📞 0208 294 2577 ✉ [ElthamPalaceHospitality@english-heritage.org.uk](mailto:ElthamPalaceHospitality@english-heritage.org.uk)

## KENWOOD

Set in the rolling hills of Hampstead Heath, Kenwood is a London venue that feels like it's in the heart of the countryside. With extensive green lawns, lavish interiors and a world-class art collection, the house and grounds are perfect for entertaining indoors and outdoors, day and night.

✉ [KenwoodHouseHospitality@english-heritage.org.uk](mailto:KenwoodHouseHospitality@english-heritage.org.uk)

## RANGER'S HOUSE

On the fringes of Greenwich Park, this Georgian villa filled with Renaissance art, antique furnishings and a dazzling jewellery collection will lend an air of exclusivity to your event. The wood floored gallery and walled garden offer plenty of options for conferences, dinners and showcases.

📞 0208 294 2577 ✉ [RangersHouseHospitality@english-heritage.org.uk](mailto:RangersHouseHospitality@english-heritage.org.uk)

## WELLINGTON ARCH

This iconic London landmark has a modern events space, creating a venue that's a charismatic mixture of old and new. Spanning the top of the arch, the Quadriga Gallery opens up onto balconies where your guests can enjoy spectacular views across the capital.

📞 0207 973 3418 ✉ [Corporate.Events@english-heritage.org.uk](mailto:Corporate.Events@english-heritage.org.uk)

## WREST

With its magnificent grounds and honey-coloured mansion house, events held at Wrest Park come ready-made with an unmistakable sense of grandeur. A choice of elegant rooms, a light and airy Orangery and a magnificent marquee site, make it an adaptable venue for all seasons.

📞 0152 586 3704 ✉ [Wresthospitality@english-heritage.org.uk](mailto:Wresthospitality@english-heritage.org.uk)

# YOUR SUPPORT MAKES A DIFFERENCE

---

By hosting your event with us, you'll be playing a vital role in keeping this mansion house's remarkable story alive. Your support will help us to care for this magnificent mansion, and over 400 other historic sites, so that they can continue to inspire us for generations to come.







ENGLISH  
HERITAGE

*Step into England's story*

For more information on hiring Osborne or to book a viewing, contact

 Osborne, York Avenue, East Cowes, Isle of Wight P032 6JX

 [OsborneHospitality@english-heritage.org.uk](mailto:OsborneHospitality@english-heritage.org.uk)

 [english-heritage.org.uk/osborneevents](http://english-heritage.org.uk/osborneevents)

 01983 203 055